



**basically trade**<sup>®</sup>

BESPOKE KITCHEN & BEDROOM MANUFACTURER

Trade Brochure





basically trade®

BESPOKE KITCHEN & BEDROOM MANUFACTURER

## CUSTOM-MADE CABINETS

High quality custom units produced with precision here in the UK. However bespoke your project, we can manufacture to your exact specification. We are also a very competitive supplier of standard units.

# OR OFF THE SHELF OFF THE WALL

## Our solutions are made for the trade.

Whether you need standard sizes or strikingly unique designs, Basically Trade will collaborate with you to enhance every last mm of storage space for your client.

Our standard units are perfect for most applications, but if your project is far from standard, we have the experience to help you solve complex issues and manufacture custom solutions for even the most bespoke projects.



## It's all in the details

Drawing on years of experience in cabinet making and working with clients in varied sectors, we can help develop the best storage solution for any home or business. Basically Trade provides an impeccable finish – right down to installing pull out solutions prior to delivery. Our reputation depends on quality, so we work only with trusted partners.

Basically Trade has tackled all kinds of technical challenges, without ever compromising on quality. Basically Trade uses sustainably sourced timber to manufacture our own products right here in the UK.

Whatever style, size, colour or shape is required for your client, our precision equipment ensures a flawless finish.

## Our cabinets are built to last, and designed with the fitter in mind







## BEAUTIFULLY BESPOKE **BEDROOM STORAGE**



We can help you create a haven of calm and organisation for your clients.

Whether they're hanging designer dresses, or storing stacks of socks - we can work with you to create the perfect wardrobe space. However awkward the space, we can help. Talk to us about options like different depth drawers or sloped-back storage.

As you'd expect, all cabinets are colour coded throughout to match the doors, and Blum fittings are used as standard. To save time during installation, robes are supplied flat packed for easy manoeuvrability while drawer units and top boxes are provided fully assembled.

Basically Trade is committed to quality and all the units we manufacture are 18mm throughout, including backs and drawer boxes.

Don't forget the details: we can offer clear-lacquered, solid timber dovetailed drawer boxes in timbers such as Birch Plywood, Oak, Walnut, Beech and Maple, pull down hanging rails, trouser and tie storage and shoe storage.

*\* Prices on quotation basis*



# Bedroom Carcasses

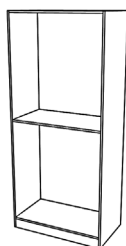
## Wardrobes (2260 high)



STANDARD SINGLE ROBE  
1 hanger

Code: **BR3 - BR6**

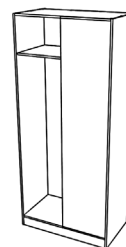
Width (mm): 300 - 600



STANDARD DOUBLE ROBE  
1 hanger (shown as double hanging)

Code: **BR6T - BR12**

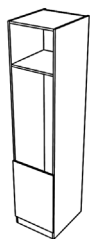
Width (mm): 600 - 1200



STANDARD CORNER ROBE  
Including 500 blanking panel

Code: **BCR35 - BCR6**

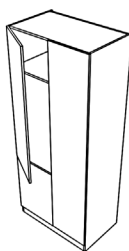
Width (mm): 850 - 1100



SINGLE STABLE ROBE

Code: **BSR5 - BSR6**

Width (mm): 500 - 600



DOUBLE STABLE ROBE

Code: **BSR9 - BSR10**

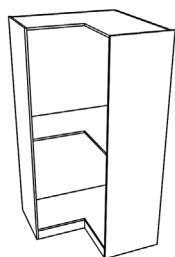
Width (mm): 900 - 1000



CORNER DIAGONAL ROBE  
1 curved hanger

Code: **BDR4 - BDR65**

Width (mm): Back width in both directions 870 - 1050



L-SHAPE CORNER ROBE  
Curved hanger (shown as double hanging)

Code: **BLCR3 - BLCR5**

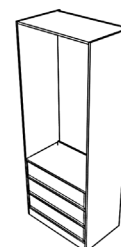
Width (mm): back width 870 x 890,  
970 x 990, 1070 x 1090



SINGLE COMBINATION LINEN ROBE  
1495 high doors, 3 x 215 drawers

Code: **BLR3 - BLR6**

Width (mm): 300 - 600

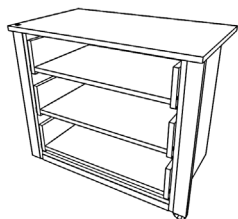


DOUBLE COMBINATION LINEN ROBE  
1495 high doors, 3 x 215 drawers

Code: **BLR7 - BLR10**

Width (mm): 700 - 1000

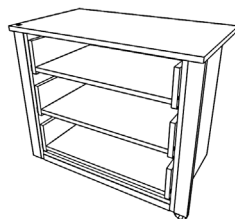
## Internal Accessories



**SINGLE INTERNAL CHEST**  
Including MFC worktop

Code: **BIC4 - BIC6**

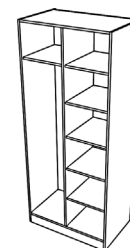
Width (mm): 400 - 600



**DOUBLE INTERNAL CHEST**  
Including MFC worktop

Code: **BIC7 - BIC10**

Width (mm): 700 - 1000

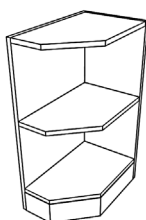


**INTERNAL ROBE PACK**  
1 divider, 5 shelves, 1 rail

Code: **BRP6 - BRP12**

Width (mm): 600 - 1200

## External Accessories



**RH / LH BASE END SHELF**  
760 high inc 100 plinth

Code: **BBESR3 / BBESL3**

Width (mm): 300



**RH / LH TALL END SHELF**  
2260 high inc 100 plinth

Code: **BTESR3 / BTESL3**

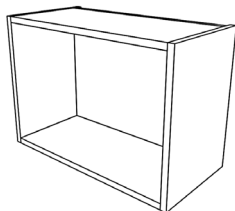
Width (mm): 300



36mm worktops and shelves

# Bedroom Carcasses

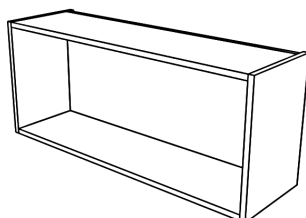
## Top Boxes (height as stated)



**SINGLE TOP BOX**  
420 high, 415 high door

Code: **BBSTB3 - BBSTB6**

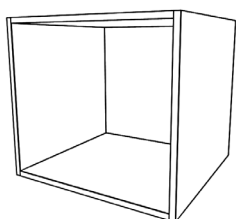
Width (mm): **300 - 600**



**DOUBLE TOP BOX**  
420 high, 415 high door

Code: **BBSTB7 - BBSTB12**

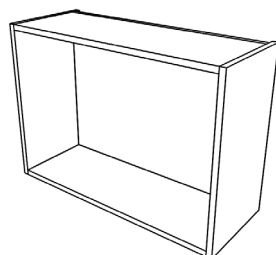
Width (mm): **700 - 1200**



**SINGLE TOP BOX**  
540 high, 535 high door

Code: **BBTTB3 - BBTTB6**

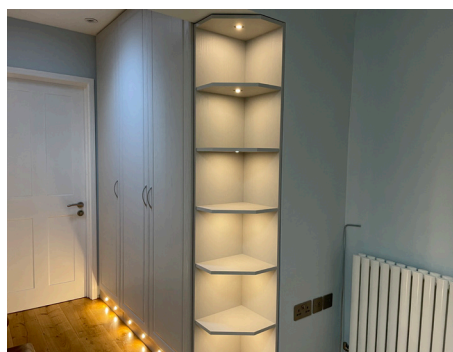
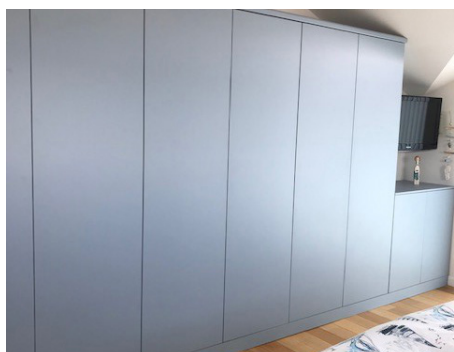
Width (mm): **300 - 600**



**DOUBLE TOP BOX**  
540 high, 535 high door

Code: **BBTTB7 - BBTTB12**

Width (mm): **700 - 1200**





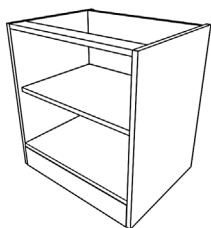
HALSTED & WARD

H&W Bedroom furniture painted in F&B Stiffkey Blue 25% sheen



# Bedroom Carcasses

## Bedside Height Base Units (640 high)

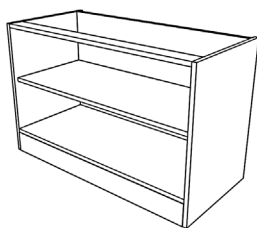


### BEDSIDE SINGLE CABINET

535 high door

Code: **BBC3 - BBC6**

Width (mm): 300 - 600

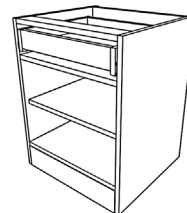


### BEDSIDE DOUBLE CABINET

535 high doors

Code: **BBC6T - BBC12**

Width (mm): 600 - 1200

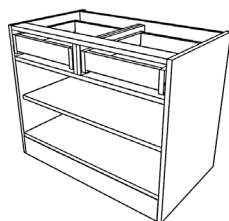


### BEDSIDE SINGLE DRAWERLINE BASE UNIT

390 high door, 140 drawer

Code: **BBDB3B - BBDB6B**

Width (mm): 300 - 600



### BEDSIDE DOUBLE DRAWERLINE BASE UNIT

390 high doors, 140 drawers

Code: **BBDB6TB - BBDB10B**

Width (mm): 600 - 1000



### BEDSIDE SINGLE DRAWERLINE BASE UNIT

415 high door, 115 drawer

Code: **BBDB3 - BBDB6**

Width (mm): 300 - 600



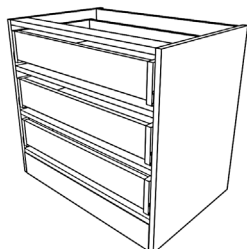
### BEDSIDE DOUBLE DRAWERLINE BASE UNIT

415 high doors, 115 drawers

Code: **BDR4 - BDR65**

Width (mm): 600 - 1000

## Bedside Height Drawer Chests (640 high)

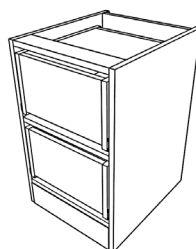


### BEDSIDE 3 DRAWER CHEST

3 x 175 drawers

Code: **BB3D3 - BB3D10**

Width (mm): 300 - 1000



### BEDSIDE 2 DRAWER CHEST

2 x 265 drawers

Code: **BB2D3 - BB2D10**

Width (mm): 300 - 1000

## Standard Height Base Units (760 high)



### STANDARD HEIGHT SINGLE BASE UNIT

655 high door

Code: **BSHB3 - BSHB6**

Width (mm): 300 - 600

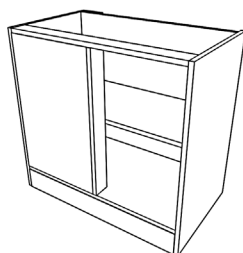


### STANDARD HEIGHT DOUBLE BASE UNIT

655 high doors

Code: **BSHB6T - BSHB12**

Width (mm): 600 - 1200

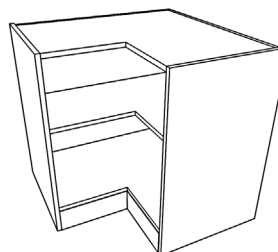


### STANDARD HEIGHT CORNER BASE UNIT

655 high door including  
400 blanking panel

Code: **BSHCB35 - BSHCB6**

Width (mm): 750 - 1200



### STANDARD HEIGHT L-SHAPE CORNER

655 high doors

Code: **BSHLCB**

Width (mm): 770 x 790

## Bedroom Carcasses



Our PVC edged and veneered fronts are book matched grain.



## Standard Height Drawerline Base Units (760 high)

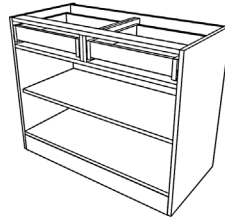


### STANDARD HEIGHT SINGLE DRAWERLINE BASE UNIT

510 high door, 140 drawer

Code: **BSDB3B - BSDB6B**

Width (mm): 300 - 600



### STANDARD HEIGHT DOUBLE DRAWERLINE BASE UNIT

510 high door, 140 drawer

Code: **BSDB6TB - BSDB10B**

Width (mm): 600 - 1000



### STANDARD HEIGHT SINGLE DRAWERLINE BASE UNIT

535 high door, 115 drawer

Code: **BSDB3 - BSDB6**

Width (mm): 300 - 600



### STANDARD HEIGHT DOUBLE DRAWERLINE BASE UNIT

535 high door, 115 drawer

Code: **BSDB6T - BSDB10**

Width (mm): 600 - 1000

## Standard Height Drawer Chests (760 high)

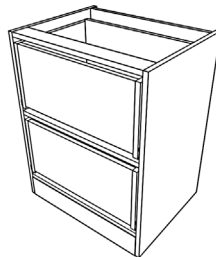


### STANDARD HEIGHT 3 DRAWER CHEST

3 x 215 drawers

Code: **BS3D3 - BS3D10**

Width (mm): 300 - 1000



### STANDARD HEIGHT 2 DRAWER CHEST

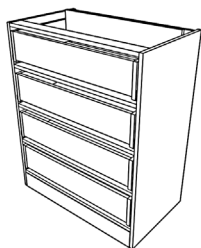
2 x 325 drawers

Code: **BS2D3 - BS2D10**

Width (mm): 300 - 1000

# Bedroom Carcasses

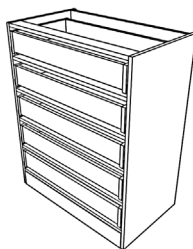
## Tall Drawer Chests (height as stated)



4 DRAWER CHEST  
980 high, 4 x 215 drawers

Code: **B4D3 - B4D10**

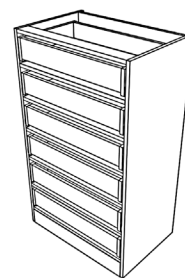
Width (mm): 300 - 1000



5 DRAWER CHEST  
1000 high, 5 x 175 drawers

Code: **B5D3 - B5D10**

Width (mm): 300 - 1000

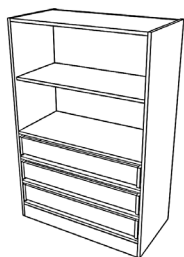


6 DRAWER CHEST  
1180 high, 6 x 175 drawers

Code: **B6D4 - B6D10**

Width (mm): 400 - 1000

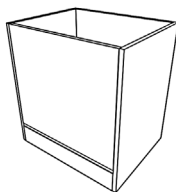
## Miscellaneous



TV UNIT WITH 3 DRAWERS  
1360 high, 715 high doors,  
3 x 175 drawers

Code: **BTV8 - BTV10**

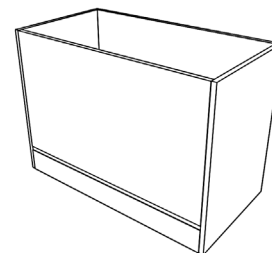
Width (mm): 800 - 1000



LAUNDRY CHEST  
760 high, 450 wide, 450 deep

Code: **BLC**

Width (mm): 450

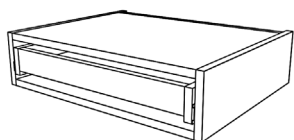


OTTOMAN  
640 high, 470 deep

Code: **BO3 - BO10**

Width (mm): 300 - 1000

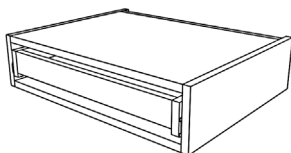
## Accessory Drawers



VANITY DRAWER  
120 high, 115 drawer

Code: **BV5 - BV10**

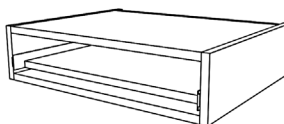
Width (mm): 500 - 1000



VANITY DRAWER  
145 high, 140 drawer

Code: **BV5B - BV10B**

Width (mm): 500 - 1000



KEYBOARD DRAWER  
145 high

Code: **BK5 - BK8**

Width (mm): 500 - 800

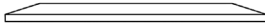


PULLOUT SHOE SHELF  
18mm shelf with 75mm front/back

Code: **K5 - K10**

Width (mm): 500 - 1000

**Accessory Panels**



**ADDITIONAL SHELF**  
470 deep

Code: **BS3 - BS10**

Width (mm): 300 - 1000



**CEILING SCRIBING PANEL**

Code: **BSP2 - BSP10**

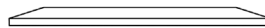
Width (mm): 2600 x 200 - 1000



**MFC PLINTH**

Code: **BBPMFC**

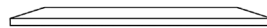
Width (mm): 2600 x 100



**BRIDGING SCRIBE PANEL**  
Edged two long sides

Code: **BBSP**

Width (mm): 2600 x 570



**FLYOVER SHELF**  
2600 long

Code: **BFO15 - BFO45**

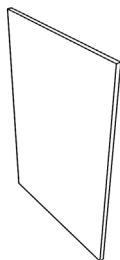
Width (mm): 150 - 450



**SHOWBACK PANEL**  
900 high

Code: **BBP12 - BBP26**

Width (mm): 1200 - 1600



**END SUPPORT PANEL**  
600 wide

Code: **BBEPS - XTEP**

Height (mm): 640 - 2400



**BASE & WALL FILLER**  
100 wide

Code: **BF2 - BF7**

Height (mm): 720 - 2600



**BASE & WALL FILLER**  
200 wide

Code: **BF9 - BF14**

Height (mm): 720 - 2600

# DOOR RANGES

The door options available from Basically Trade are limitless. We offer standard sizes in all sorts of styles, from traditional shaker, to sleek, modern handleless options in a wealth of finishes.

We can also manufacture made-to-measure doors to your exact specification.

Brands we offer are: Bella, Browns2000, PVC edged, Halsted & Ward



**basically trade**  
BESPOKE KITCHEN & BEDROOM MANUFACTURER

**HALSTED & WARD**  
BEAUTIFULLY BESPOKE PAINTED DOORS



Basically Trade - PVC edged



Halsted & Ward - Painted



Bella



Browns 2000

# IMAGINE THAT

While kitchens, bedrooms and bathrooms are our 'bread and butter', we manufacture bespoke storage solutions for every room in the house, and for discerning businesses too.

Basically Trade has been praised for our useful utility room storage, multi-functional media rooms, home offices and even

hotel bars. We've created everything from tiny kitchen pods to expansive shop shelving, and our customers describe us as the 'go-to company for problem solving'.

**The only limit is your imagination.**

**We can help with everything else.**



# HALSTED & WARD

BEAUTIFULLY BESPOKE PAINTED DOORS

Halsted and Ward is our premium range of bespoke painted panels and doors. These immaculate products are manufactured in house and are so beautifully finished that we're proud to put our family names to them.

Basically Trade is completely committed to quality and we went above and beyond in bringing this range to fruition: over a year of research and development, examining and comparing countless samples, continuous testing and re-testing of materials and finishes until we finally arrived at the perfect combination of product and paint quality needed for such a flawless finish.

We spent more than a year finding the perfect paint company – a family-run firm who are (almost) as passionate about the new Halsted & Ward range as we are.

We have in-house stock of the highest quality 22mm Fibralac MDF giving us complete control over quality and lead times on the Halsted & Ward range.

This made-to-measure range is available in absolutely any colour, and in the following styles:

- ONE-PIECE SHAKERS  
*your choice of rail widths*
- J PULL
- FLAT SLAB  
*with 3mm Radiused front edges*
- PANELS



# 10 year Carcass Guarantee

This guarantee does not apply to any parts, materials or equipment that are not supplied by Back to Basics Ltd t/a Basically Trade, nor does it apply to faults arising from incorrect design, poor planning, substandard fitting, insufficient maintenance or damage caused by water ingress.

We, Back to Basics Ltd t/a Basically Trade ( The 'Seller' ) – Company Registration No 5504769, Unit 2, Wyre Street, Padiham, Lancashire, BB12 8DF hereby Guarantee that the Kitchen and Bedroom carcasses will be free from manufacturing defects in materials and workmanship for a period of 10 years from the date of delivery of the products, subject to the following conditions:

1. In so far as the terms of this Guarantee are inconsistent with the Seller's standard terms and conditions of sale, the contents of this Guarantee shall prevail.
2. Our Customer must notify the Seller, in writing, of the nature of the alleged defect within one month of the delivery date or (where the defect or failure was not apparent upon reasonable inspection) within 3 months after the date of discovery and within the period of this Guarantee.
3. The Seller shall not be liable for any defect on its products arising from any drawing, design or specification supplied by, or to our Customer.
4. The Seller shall not be liable for any defect arising from wilful damage, negligence, abnormal working conditions, incorrect design or fitting by our Customer or any third party other than the Seller. Neither will it be liable for our Customer's failure to follow the Seller's instructions (whether oral or in writing), misuse, alteration or repair of the products without the Seller's prior approval.
5. The Seller shall not be liable for normal product wear and tear as a result of general domestic use. Neither does this Guarantee apply to defects relating to other manufacturer's products.
6. The Seller shall not be liable under the Guarantee if the total price of the products has not been paid for by the due date for payment.
7. Where any valid claim regarding a product is agreed by the Seller and is based upon a defect in the quality or condition of the products or the Seller's failure to meet any specification, our Customer shall be entitled at their choice to have the original product repaired. If, from this, the claim cannot be resolved it will be directly replaced with the most similar product available at the time. No credit notes or cash refund will be given by the Seller; neither will it be responsible for the product installation.
8. Save for the Seller's obligations referred to in clause 7 above, the Seller shall have no further liability to our Customer and shall not be liable (save for death or personal injury) for consequential loss or damage, costs, expenses, or other claims for consequential compensation (whether caused by the negligence of the Seller, its employees, agents or otherwise) in connection with the supply of the products or their use or resale by our Customer.
9. Natural environmental changes, such as the passage of time and exposure to light, cause the colour of materials to gradually alter. Therefore if a replacement is required, it may not be possible to provide a new carcass which exactly matches the existing units. In this case, should the original material be no longer available, the Seller will endeavour to provide the closest possible alternative from the current range.
10. This Guarantee shall be governed by and construed in all respects in accordance with English Law.
11. This Guarantee is nontransferable and supersedes any previous agreement or contract, expressed or implied.
12. Your Statutory Rights are not affected by the Terms of this Guarantee.





**Basically Trade**

Unit 2  
Wyre Street  
Padiham  
Lancashire  
BB12 8DF

**01282 816434**

email: [sales@basicallytrade.co.uk](mailto:sales@basicallytrade.co.uk)

[www.basicallytrade.co.uk](http://www.basicallytrade.co.uk)

**basically trade**<sup>®</sup>  
BESPOKE KITCHEN & BEDROOM MANUFACTURER